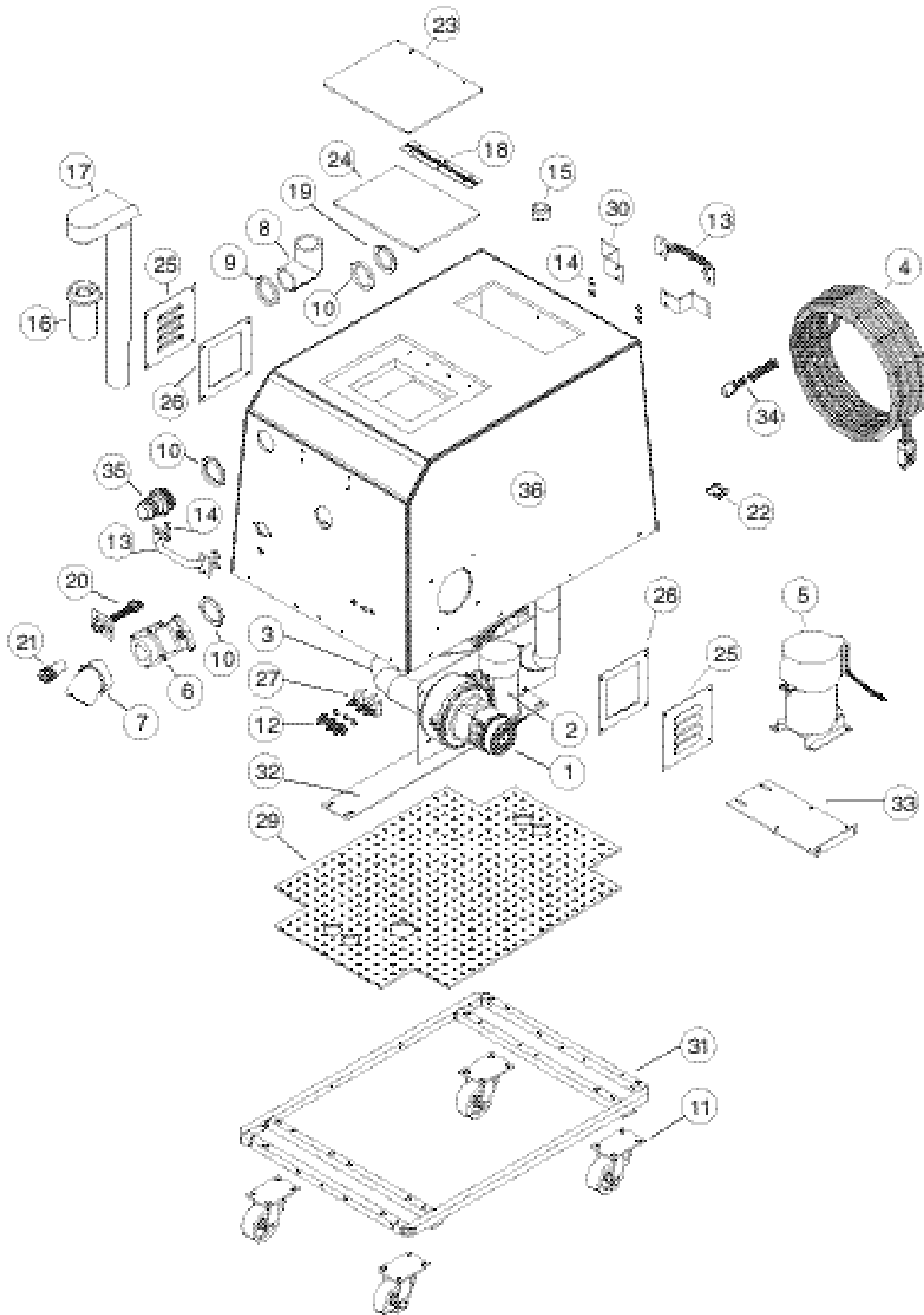


EXTRACTORS

Parts for PFX5, PFX10 and PFX15 Series



EXTRACTORS

Parts for PFX5, PFX10 and PFX15 Series

ref#	order	description
1	1942	2 stage, 1 speed bypass motor (PFX5 1 req., PFX10S, PFX15S 2 req.)
	1964	3 stage, 1 speed bypass motor (PFX5S, PFX10, PFX15 1 req.)
2	FJ2000X	flojet duplex diaphragm, 45PSI pump PFX5, PFX5s, PFX10
	FJ2030X	flojet duplex diaphragm, 100 PSI pump EPDM, PFX15, PFX10S, PFX15S
3	J1003GC	14" hose for extractor
4	M1403	30' 12/3 SJTWA 30' cord, yellow
5	PF1750	heater unit
6	PX10	dump valve
7	PX11	dump valve elbow
8	PX11A	90° 2" elbow (inside waste tank)
9	PX14	drain valve gasket, thick
10	PX14A	drain valve and intake gasket, thin
11	PX26	3" swivel caster wheel assembly
	PX26A	3" polyolifin replacement wheel only
12	PX28	insulator boot for toggle switch
13	PX29	handle
14	X8232	10-24 1 1/4" screw, stainless
15	PX30	mesh screen, rubber end
16	PX31	float cage and ball, rubber top
	PX31L	float cage with hollow float ball (5 gallon)
	PX20	float cage (old style)
17	PX33	vacuum tube
18	PX40	lid hinge
19	PX46	1-1/2" die cast lock nut for PX10
20	PX49	powr-extractor receptacle
21	PX6	brass female quick disconnect coupler
22	PX50	bumper clamp
23	PX51	lid and gasket (for 10 & 15 gallon)
	PX51A	lid and gasket (for 5 gallon)
	PX51D	lid assembly complete(includes lid, gasket, hinge and screws) for 5 gallon
	PX51C	lid assembly (includes lid, gasket, hinge and screws for units with serial numbers beginning 600 and 7000 (for 10 and 15 gallon)
	PX47	extractor lid assembly (including lid, gasket and hinge) black for units with serial numbers prior to 4000 and 5000
24	PX51G	lid gasket
25	PX53	louver vent
26	PX53G	louver gasket
27	PX7	toggle switch
29	PX83A	bottom cover PFX5, PFX5S
	PX83B	bottom cover PFX10S, PFX15S
30	PX9	cord wrap bracket
31	PX91	frame (PFX10)
32	PX94	motor bracket
33	PX97	bracket, heater
34	X8008	flexible strain relief
35	PX25	1-1/2" vacuum hose adapter
36	PX82	fiberglass housing, 5 gallon
	PX81	fiberglass housing, 10 gallon
	PX80	fiberglass housing, 15 gallon

PUMP REPLACEMENT PARTS

order	description
PX1	pressure switch only (FJ2000X only), 45 PSI
PX15	3/8" 90° elbow fitting
PX15A	1/4" 90° elbow fitting
PX15B	3/8" straight fitting
PX37	switch and housing assembly only (FJ2030X)
FJ5	internal rectifier with leads
FJ6	pump diaphragm repair kit for 2000 and 2100 series pumps
FJ7	pump diaphragm repair kit for 2030 and 2130 series pumps
FJ11	check valve only FJ2000X
FJ12	check valve (2030-577B series) 100 PSI pump
FJ14	check valve (2130-577B series) 100 PSI pump
FJ18	1-spring and 1-poppet for FJ14 100 PSI pump
FJ20	HeavyDuty Pressure Switch, for 2130/2135 Series

Fax Orders to 817.551.0719

NOT ILLUSTRATED

order	description
PFX-NS	stainless steel wand, 100 PSI (PFX15, PFX15S,
PX10A	T-handle, dump valve
PX12	connector plate for receptacle
PX13	motor gasket 1942 motor (PFX15S, PFX10S, PFX5)
PX13X	motor gasket 1964 motor (PFX15, PFX10, PFX5S)
PX17	brass 1/4" 45° elbow for wands
PX18	kingston valve for blue wand
PX19	brass valve & trigger assembly, fits all PFX wands
PX2	100 PSI spray tip, blue wand
PX22	fibre washer for wand
PX23	20" internal solution hose (10 & 15 gallon)
PX23A	16" internal solution hose (10 & 15 gallon)
PX23B	6" internal solution hose (5 gallon)
PX23D	12" internal solution hose (5 gallon)
PX23W	42-1/2" solution hose only for stainless steel wand
PX24	39" solution hose assembly for blue wand
PX24A	solution hose for stainless steel wand
PX26B	torque nut for replacement wheel
PX26C	axle bolt for replacement wheel
PX29G	gasket, handle
PX2A	45 PSI spray tip, 95° no. 10, for blue wand
PX2B	45 PSI spray tip, 110° no. 10
PX2C	100 PSI spray tip, 110° no. 6
PX32	1/4" brass nipples for solution hose
PX36	wire harness
PX4	valve lever, blue wand
PX42	5/8" stainless steel solution hose clamp
PX43	2-3/4" stainless steel solution hose clamp
PX44	valve mounting bracket (2 required)
PX48	3/4" brass fitting
PX48G	gasket
PX4A	valve lever and roll pin, stainless steel wand
PX5	brass, male coupler
PX54	handle grip, stainless steel wand
PX55	one ear solution hose clamp
PX58	valve and lever assembly, Polyolifin, fits all
PX8	brass male hose barb
PX84	female 3/8" hose barb
PX85	male 3/8" hose barb
X8008N	nut for strain relief
X8030A	80" bumper
X8030D	60" bumper
X8055	cable strain relief
X8238	lid hinge screws
X8240	6-32 stainless nut
X8241	10-24 hex nut, stainless
X8245	screw, bottom cover
X8250	cushion stop

HOSES

order	description
1501WDS	10' TMHD blue/black with cuffs attached and solution line
1502WDS	15' TMHD blue/black with cuffs attached and solution line
1503WDS	25' TMHD blue/black with cuffs attached and solution line
1501WD	10' TMHD blue/black with cuffs attached
1502WD	15' TMHD blue/black with cuffs attached
1503WD	25' TMHD blue/black with cuffs attached
1504WDSI	20 feet vac and internal solution hose with cuffs and fittings
1505WDSI	30 feet vac and internal solution hose with cuffs and fittings

Orders before 1 PM Ship The Same Day!